



Rely on it.

Connecting materials.

RENOLIT ALKORSOLAR



Five domed design...

CHALLENGE

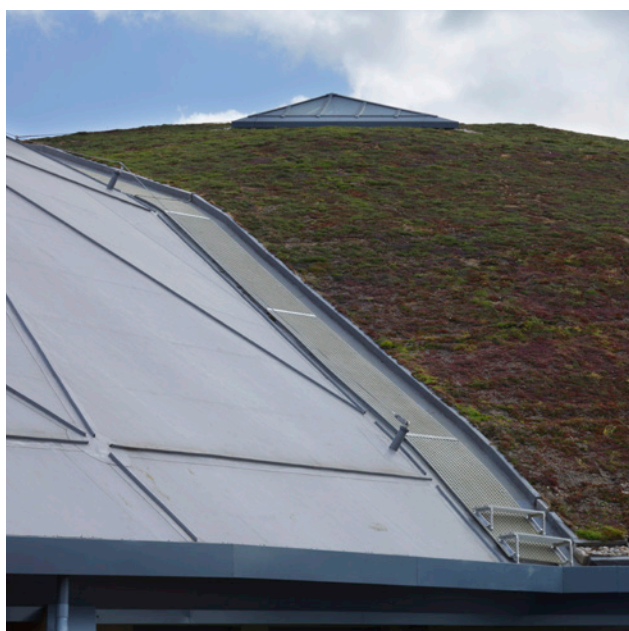
The idea of the architect was to design a building with 5 parabolic roof surfaces or domes. The **unique five domed design** comprises of pods finished in a range of different materials, each contributing to the development's remit to blend into the park landscape. The biggest issue for the architect was how to connect these different materials to become a complete water-tight building.

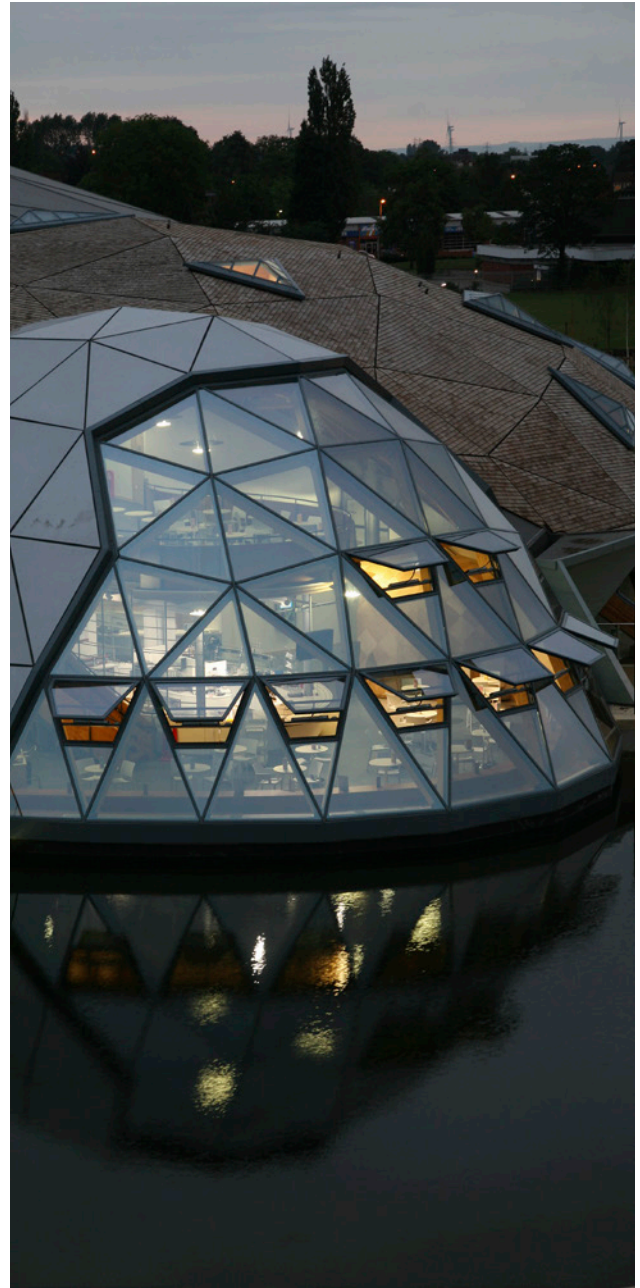
SOLUTION

Each dome is waterproofed using a **RENOLIT ALKORPLAN** system and whilst the complex is thought to be the UK's largest timber-built geodesic project, it also demonstrates

possibly the most innovative use of single ply membrane ever seen in the UK. By using the **RENOLIT ALKORPLAN** membrane as the main layer to waterproof the five domes an easy joint could be made by means of hot air.

On one dome our **RENOLIT ALKORPLAN A** membrane was used in combination with PVC profiles providing geometric aesthetic detailing. On another dome a **RENOLIT ALKORPLAN L** membrane was used under a green roof system. On the other domes the **RENOLIT ALKORPLAN F** membrane was used in combination with our **RENOLIT ALKORSOLAR** fixing system supporting respectively glazed aluminium sheeting and cedar shingle tiles.





SPORTS ACADEMY

- Leisure Center
- Scunthorpe, UK

PRODUCTS

- RENOLIT ALKORPLAN A-F-L
- RENOLIT ALKORSOLAR
- RENOLIT ALKORDESIGN profiles